

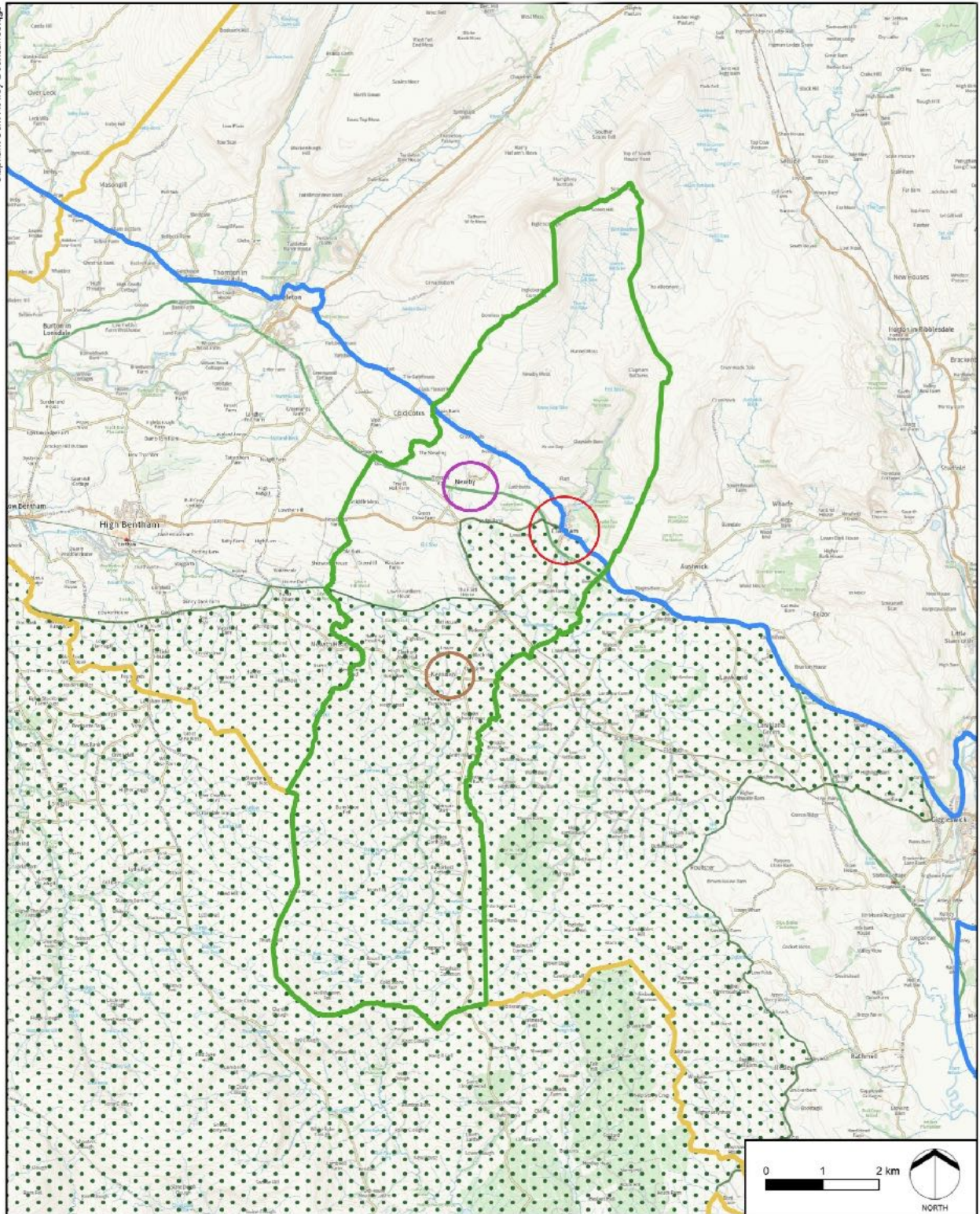
Clapham cum Newby Neighbourhood Plan 2023 - 2030

**Draft Submission
September 2023**



Clapham cum Newby:
A strong sustainable community





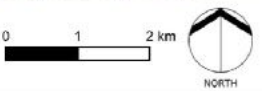
Clapham cum Newby Designated Neighbourhood Area Plan Boundary

FIGURE 1

- Clapham
- Newby
- Keasden

KEY

- Forest of Bowland Area of Outstanding Natural Beauty (AONB)
- Parish and Neighbourhood Plan Area Boundary
- Former Craven District Council LPA
- Yorkshire Dales National Park LPA



STEPHENSON HALLIDAY
 Planning, Landscape & Environment
 an RSK company

Projected Coordinate System: British National Grid

DATE	BY	PAPER	SCALE	QA	REV
NOV 2022	MD	A4	1:90,000	DH	-

The Parish of Clapham cum Newby is a very special place. It is both beautiful and neighbourly in the truest sense of the word. The Neighbourhood Plan grew out of desire within Clapham Parish to maintain both its beauty and neighbourliness to ensure that it has the foundations to remain a vibrant and sustainable community. To achieve that end the Neighbourhood Plan Steering Group recognised that Clapham needed further development so that young people would be able to live and work in the locality.

However, in such a fragile environment everyone wanted to make sure that any development was in keeping with the village's traditions and in securing the future the plan had to make sure that we kept faith with the past. This has been an exceptionally difficult task and the Neighbourhood Plan Steering Group has laboured long and hard to reconcile these demands. The Parish Council is very grateful for their efforts and would like to thank all the members of the Group, current and past, for their efforts. In this they have been supported by Parish Council colleagues.

We would also like to thank our former Parish Clerk, Nigel Harrison, who ably acted as responsible financial officer for most of this process, a task recently taken up by his successor, Steve Culver. The Planning Departments of the Yorkshire Dales National Park Authority, (YDNPA), and North Yorkshire Council (NYC), have also been extremely helpful, especially Peter Stockton and Ruth Parker. We'd also like to thank Christine Bell from the Centre for Facilitation who did so much of the number crunching.

Finally, I would like to reiterate our thanks to the Neighbourhood Plan Steering Group. Denise Wilson, Adrienne Robbins, Robert Klottrup, Ken Pearce, James Innerdale, Jill Gates, Anne-Marie Bond and Ann Sheridan have all worked incredibly hard on this process. Without them there would be no Neighbourhood Plan.

~~Colin Price, Chairman, Clapham cum Newby Parish Council~~

Colin Price, Chairman, Clapham cum Newby Parish Council—

Theme	Table of Contents	Page
	Introduction and Background	1
	Clapham cum Newby Vision	2
	Neighbourhood Plan Objectives	5
	Table of Policies	9
	Table of Community Aspirations	10
	Table of Community Actions	11
1	Housing	13
2	Built and Historic	29
3	Natural Environment	53
4	Economy and Business	75
5	Community Facilities	85
6	Communications Infrastructure	99
7	Sustainable Travel	105
	Table of Appendices	117
	Table of Hyperlinks to Websites	176

