

Date: 30 March 2021

Report: REVIEW OF PARTNERSHIPS

Purpose of the report

1. To report the outcome of the biennial review of the Authority's partnerships and seek Members' comments on the Authority's involvement in its range of partnerships.

RECOMMENDATION

2. That Members:
 - a. consider and agree the revised list of strategic partnerships (**Annex B**)
 - b. note the range and scale of current project partnerships (**Annex C**)

Strategic Planning Framework

3. The information and recommendation(s) contained in this report are consistent with the Authority's statutory purposes and its approved strategic planning framework:
 - **Corporate Plan objectives**
 34. *Plan and manage the Authority's work so as to make the most effective use of our resources, including generating sufficient income to maintain expenditure at the same level as 2014/15 in real terms across the extended National Park area*

Background

4. Many of the Authority's objectives can only be delivered through strong, supportive partnerships. However, partnership working can be time consuming and resource intensive. It is, therefore, critical to ensure that the partnerships in which the Authority is engaged are really contributing effectively to achieving our objectives and targets.
5. For the avoidance of doubt, 'partnerships' is used here in a non-legal sense and encompasses the following:
 - a. groupings of organisations that meet regularly to discuss and/or make plans for matters of mutual interest ("strategic partnerships");
 - b. groupings of organisations working together to deliver specific initiatives or large-scale projects ("project partnerships").
6. The Authority has long-standing procedures in place for managing the volume and nature of the 'partnerships' into which it enters. These procedures are driven primarily by the need to manage the amount of time spent on 'partnerships' (for which read time

spent in meetings), where they are not delivering tangible benefits for the National Park or for our specific objectives.

7. The procedures comprise:

- a. Criteria to assess whether the Authority ought to enter a partnership (**Annex A**);
- b. A review every two years of all existing partnerships (this report); and,
- c. Regular consideration of the risks associated with each partnership and the extent to which those are being effectively managed (e.g. through the existence of clear terms of reference etc)

Consideration

Strategic partnerships

8. **Annex B** lists 52 strategic partnerships with which the Authority is currently engaged, together with details of the partnership’s representation, role and value (in terms of National Park purposes and associated duty).
9. Overall, the number of strategic partnerships has increased (from 46 to 52). Only two partnerships have ended since the last review:

Name of Group	Reason for withdrawal
NYCC Independent Commission Reference Group	Partnership’s work has been completed.
Wensleydale Strategy	Strategy published and focus now on individual projects that will help deliver the strategy

10. Eight strategic partnerships have been added to the list since the last review:
 - a. Zero Carbon Cumbria
 - b. Richmondshire Climate Action Partnership
 - c. NY Local Authority 'Low Carbon' Lead Officers Group
 - d. Cumbria Local Nature Recovery Strategy steering group
 - e. Raptor Co-ordination Group
 - f. Cumbria Joint Public Health Strategy
 - g. Defra Landscapes Review Contact Group
 - h. Cumbria Strategic Recovery Coordinating Group

11. The current partnerships commit the Authority to 410 FTE days per annum (officer: 346; Members: 64); an increase of 10% since 2019.

Project partnerships

12. **Annex C** lists the 12 current project partnerships, together with details of the partners, the project and the indicative annual value/costs to the Authority.

13. The development of project partnerships is much more fluid than strategic partnerships, and several have come and gone since the last review in 2019. Of the current list, two may be new to those Members who are not on the Finance and Resources Committee:
 - a. Generation Green
 - b. Farm Carbon Audits
14. Overall, the number of project partnerships has fallen since 2019 (from 16-12) but the overall value of those projects had increased (largely as a result of the Authority securing significant additional funding to support the Tees-Swale: Naturally Connected programme).
15. Most of the strategic partnerships involve little in the way of financial contributions. However, Members – especially those on the Finance and Resources Committee - will be well aware of the significant financial commitment to, and dependency on, project partnerships to achieve our objectives. The project partnerships listed are worth roughly £1.4 million per year, to which the Authority is contributing around £270,000.

Conclusion

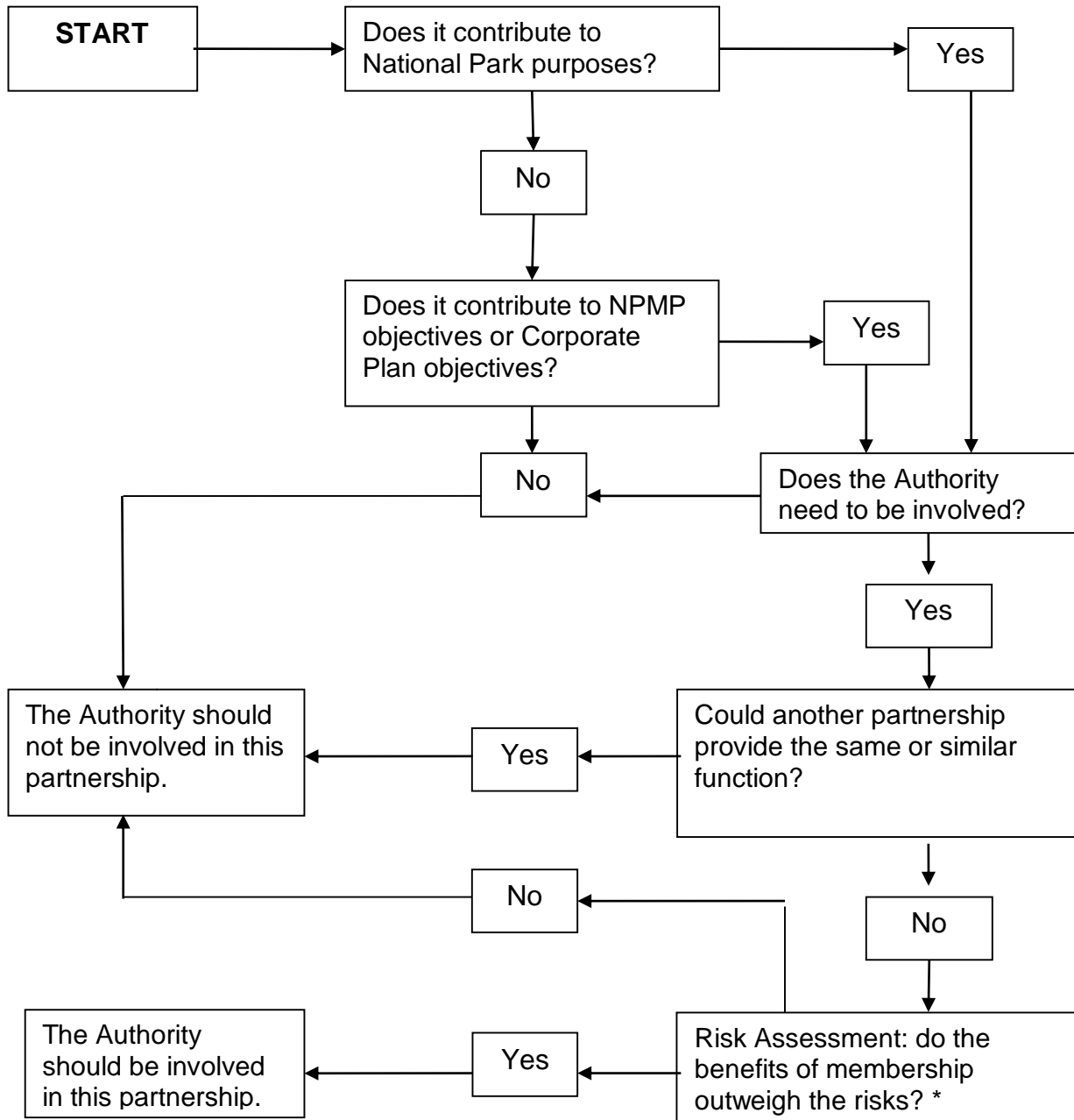
16. Partnerships – in many different forms - are an essential tool in delivering the Authority's objectives. In order for them to remain effective, they should be regularly reviewed in terms of their performance and against the partnership criteria.

Gary Smith
Deputy Chief Executive

15 March 2021

Criteria for Partnerships

The following criteria to be applied when deciding whether YDNPA should become involved in a partnership, and also in monitoring and reviewing existing partnerships:



NB: The Authority should not commit to any new partnership, unless it has appropriate governance arrangements, which are properly documented.

* This assessment should include consideration of:

1. Does the partnership have clear terms of reference?
2. Is there an engagement and/or exit strategy?
3. Is it a task and finish group with a time limit?

	Partnership	Lead officer	Representative	Partners	Contribution to achieving Purposes/duty				Description and benefits for the National Park and National Park Authority	Costs (days per annum, FTE)			NPA Priority	End date
					1st	2nd	Duty	Tot.		Off.	Mem.	Tot.		
1	National Park Management Plan Steering Group	GS	Chair & Officer	NE, EA, HE, FC, DCs, YDMT, Farmers, landowners, tourism businesses	10	10	5	25	Group set up to develop, monitor and oversee implementation of the objectives in the National Park Management Plan. Ensures NPMP objectives are achieved	8	2	10	2	n/a
2	National Park Officers' Group (England)	DB	Officer	All NPOs in England	9	9	3	21	Develops all corporate policy for National Parks England. Development of NP policy. Sharing of Best Practice	50	0	50	1-3	n/a
3	National Parks England	DB	Chair	All NPAs in England	9	9	3	21	Political grouping of English Chairs discussing and influencing NP policy nationally. Determines wider English NPA policy. Major source of influence on Govt	12	5	17	1-3	n/a
4	Yorkshire Dales Millennium Trust	GS	Officer	YDNPA / YDMT	8	8	4	20	To promote & ensure effective joint-working between the Trust and the Authority, and identify opportunities for programmes and projects that will benefit the National Park and its communities.	4	0	4	1	n/a
5	Defra Landscapes Review Contact Group	DB		Defra, NPE, NAAONBs, NE	8	8	2	18	Group established by Defra to share expertise on how the recommendations within the Landscape Review can be implemented.	20	6	26	1-3	2025
6	Yorkshire Dales Access Forum	RGr	MC for Recreation Management & N Heseltine	Park users and landowners	8	8	1	17	Statutory partnership to advise the authority on access and recreation provision and management, involving users and landowners	20	3	23	3	n/a
7	Yorkshire Dales National Park Tourism Partnership.	JMB	MC for Promoting Understanding & Officer	Agencies, NGOs, LAs, AONBs, interest groups, individuals	4	8	5	17	Group developed to assist collaborative working and reduce duplication across the 7 local authorities and 3 Destination Management Organisations involved in the delivery of tourism within the National Park. AONBs. Also links with neighbouring AONBs.	18	3	21	2	n/a
8	Yorkshire Peat Partnership	AS	Officer	YWT, NE, EA, NAONB, NT, Yorkshire Water, Pennine Prospects, NYMNPA	10	3	4	17	Multi-objective project to restore and ensure beneficial management of significant areas of degraded blanket bog and other upland peat land across north and west Yorkshire. Provides funding for: peatland restoration, improved water management, support for farmers and landowners, conservation of historic features etc	2	0	2	1	n/a
9	Campaign for National Parks	DB	J Martin	All NPAs, YHA, 40 other organisations covering a wide range of interests	7	7	2	16	Provides a corporate/voluntary sector voice on Nat Park matters and acts as an umbrella organisation for a range of national bodies interested in nat parks. Represents nat parks, acts as a conduit and effectively lobbies Govt and develops good relationships with key organisations	0	3	3	1-3	n/a
10	Northern Upland Chain Local Nature Partnership	GS	Officer	NPAONB, NAONB, NNPA, NE, FC, EA, Moorland Assoc., NFU, YWT, RSPB, Rivers Trusts	8	4	2	14	Wide-ranging partnership set up to: conserve and enhance the natural heritage of the northern uplands; and sustain and promote the benefits that the NUC provides for society, including clean air and water, food, carbon storage and other services vital to the nation's health and well-being. Provides voice at regional level on nature conservation and its benefits to wider society, and has funded a range of projects.	10	0	10	1	n/a
11	Dales Woodland Forum	GG	MC for Natural Environment	FC, NT, landowners, farmers, forestry interests	6	4	3	13	Independent forum to advise the Authority on a range of woodland issues. Helps to secure wide ownership of Dales Woodland Strategy (public and private sector). It focuses on woodland in the Dales and allows discussion of priorities for the NPA.	4	2	6	1	n/a
12	Yorkshire Dales Biodiversity Forum	TS	MC for Natural Environment & Officer	Agencies, NGOs, LAs,	8	4	1	13	Advisory group for the Development, review and implementation of LBAP. Responsible for the content of the LBAP. Broad support for the LBAP. Partnership funding.	5	1	6	1	n/a
13	Europarc Atlantic Isles	DB	Officer	All UK NPAs and AONBs	5	5	2	12	A European Section established to share expertise and experience across the UK and wider Europe.	20	4	24		n/a
14	Dales to Vale Rivers Network (Ribble Life & Living Lune catchment partnerships)	AS	Officer	Yorkshire Dales Rivers Trust, Ribble Rivers Trust & Lune Rivers Trust	8	3	1	12	Identify the causes of why the Swale, Ure, Wharfe, Ribble & Lune catchments are failing to reach Good Ecological Status; produce improvement schemes; and implement actions with landowners to improve the river environment. Funding for habitat restoration and works to improve ecological river quality e.g. tackling invasive species, reducing agricultural pollution etc	12	0	12	1	n/a
15	Yorkshire Dales Green Lanes Advisory Group	KB	MC for Recreation Management	NYCC, CCC, LARA, TRF, NYTMAG, CLA, GLA, RA, individuals	4	6	2	12	Group looking at options for management of individual green lanes in the National Park. Provides users an opportunity to give 'advice' on green lane management before the matter is considered by members	1	1	2	3	n/a
16	Yorkshire Dales Historic Environment Group	MJ	Officer	Local societies, agencies and universities actively involved in historic environment in the NP	4	5	2	11	Forum to discuss heritage issues, identify areas of concern and engender local support for initiatives. Provides mechanism for supply of HER info to NPA. Improved understanding and record. Wider awareness of work of NPA	4	0	4	2	n/a
17	Farming and Land Management Forum	HK	N Heseltine	Farmers, landowners, NFU, CLA, NE, EA, FC etc	6	1	3	10	Forum to hear opinions of the farmers and land managers in the National Park; and identify ways to work together more effectively to deliver NPMP objectives. Also provides expert input into policy making and development of external funding bids etc	20	2	22	1	n/a
18	National Park Officers' Group (UK)	DB	Officer	All NPOs in UK and Defra	4	4	2	10	A group which promotes Nat Parks in the UK and identifies areas of joint working/good practice. Development of NP policy. Sharing of Best Practice	10	0	10	1-3	n/a
19	White Rose Forest Partnership	GS	Officer	All local authorities in West Yorkshire; FC, NE; YDMT; NT; Woodland Trust etc	6	1	3	10	WRFP is a Leeds City Region-wide Community Forest, which is run as a Local Authority-based joint venture. Its primary purpose is to help the Leeds City Region increase its tree cover by 33% by 2036.	2	0	2	1	2036

20	Cumbria Strategic Floods Partnership	AS	Officer	CCC, EA, UU, District Councils, NPAs, NFU, Rivers Trusts, Highways England, Network rail etc	5	1	3	9	The partnership brings together Flood Risk Management Authorities (RMAs) and a wide range of representatives from other organisations and community groups who have an interest or responsibility for flood risk management.	4	0	4	1	n/a
21	North Yorkshire & York Cultural Strategy Group	KB	Officer	DCs, NPs, NYCC & City of York Council	2	4	3	9	A group formed of Local Authority partners in North Yorkshire to develop a new Cultural Strategy that will sit alongside work taking place in the City of York and across Leeds City Region. The strategy will focus on those sectors which are currently under represented in terms of funding and investment specifically the arts, heritage, and creative industries.	2	0	2		2022
22	Attracting younger people	GS	Chair & officer	CDC, RDC, SLDC, EDC, (NYCC)	1	2	5	8	Group set up to develop and coordinate delivery of a 5-year programme of local action to support economic and community development in ways that help to halt the decline in the younger working age (18-44) population	8	2	10	2	2024
23	LGNYY Leaders' Board	DB	Chair & Officer	Sub Regional Local Government Partners	2	1	5	8	Sub Regional Strategic Body responsible for interface with region. Powerful collection of Local Authority Leaders who determine policy at sub regional level.	3	3	6	1-3	n/a
24	LGNYY Chief Executive's Group	DB	Officer	NYCC, DCs, Police, Fire, Health authorities etc	2	2	4	8	Officer group that supports Leaders' Board and deals with relevant issues across the North Yorkshire sub-region. Closer working with public sector bodies. Sharing of knowledge/good practice	6	0	6	1-3	n/a
25	Local Government York, North Yorkshire & East Riding Housing Board	PS	R Good	Local authorities, Home Builders Federation, Homes and Communities Agency, Health & Well Being Board and National Housing Federation.	2	2	4	8	Provides a co-ordinated approach to the provision of local needs/affordable housing across the region. The Board is currently Chaired by Cllr. Richard Foster from Craven District Council.	2	4	6	2	n/a
26	YNYER Heads of Planning	RG	Officer	All YNYER planning authorities, NYCC Highways, Highway Agency, LEP, Housing Board	3	1	4	8	Principally working to DoDs group on strategic planning issues and development management practise across the region. This gives the Authority a voice in strategic decisions affecting growth in the regional economy, decisions on infrastructure and environment, responding to Government agenda and on good practise in planning.	3	0	3		n/a
27	Undergrounding - Joint Working Group for Electricity North West England	TH	Officer	3 x NPAs; 4 x AoNBs; Electricity North West; Friends of the Lake District and Peak District	5	1	2	8	To oversee implementation of programme of works to place overhead power lines underground in those parts of National Parks and AoNBs whose electricity network is provided by Electricity North West. Removal of overhead power lines and enhancement of natural beauty of key parts of the NP landscape and village conservation areas.	2	0	2	2	n/a
28	Zero Carbon Cumbria	GS	Officer	All LAs in Cumbria, NPAs, EA, NE, FC, energy providers, education bodies, Cumbria Action for Sustainability etc	3	2	3	8	To plan and oversee a radical programme of action that will enable Cumbria to become a carbon neutral county and to mitigate the likely impact of existing climate change.	2	0	2	??	n/a
29	Monitoring Environmental Outcomes in Protected Landscapes	GS	Officer	NPE, NAAONB, NE, HE, Defra	4	2	2	8	To develop and manage a national framework for monitoring environmental outcomes in National Parks and AONBs using existing national datasets, and disseminate that information to all protected landscape bodies.	3	0	3	2	n/a
30	Richmondshire Climate Action Partnership	PS/JT	J Martin + officer	tbc	3	2	3	8	To harness and coordinate knowledge, expertise and capacity to support, drive forward and celebrate projects across Richmondshire that help to tackle the climate and environmental emergency, and the ambition for a net zero carbon District'.	4	2	6	2	2030
31	Yorwoods Steering Group	GG	Officer	FC, NYCC, NYMNPA, YDMT, Rural Development Initiatives	3	1	4	8	Develop woodlands as a sustainable multi-purpose resource. Provides funding for woodfuel projects and training; business advice to forestry businesses; and, support to farmers/landowners for woodland management and planting.	2	0	2	1	n/a
32	LGNYY Spatial Planning & Transport Board	PS	MC for Sustainable Development (MC for Development Management)	Sub Regional Local Government Partners	2	2	3	7	To promote effective elected member-led strategic work between local authorities in North Yorkshire & York on transport and spatial planning issues that are 'larger than local'. All planning authorities working together strategically at sub-regional level in relation to national policy framework.	0	4	4	2	n/a
33	National Parks Partnership Ltd	DB	Chair	All 15 UK NPAs. Private Sector organisations appointed to Board of Directors.	3	3	1	7	The Board is a vehicle established by all 15 UK National Parks to develop commercial sponsorship for the equal and collective benefit of all Authorities. Development and co-ordination of National and international funding opportunities.	22	10	32	1-3	n/a
34	Grassington Moor Management Association	PR	N Heseltine	PC, NYCC, Graziers, Bolton Abbey Estate	4	1	2	7	Duties under the Commons Act CStion 9. Liaison with local community and land managers. Positive outcomes on both purposes.	3	1	4	2	n/a
35	Sedbergh Economic Partnership	PS	Officer	CCC, SLDC, Sedbergh PC, Chamber of Trade	2	2	3	7	Set up to implement the conclusions and recommendations of the Sedbergh Economic study which identifies the key economic challenges in the town and how they may be addressed. Embeds YDNPA priorities and programmes within a wider programme of activity and in doing so improves communication and co-operation between partner organisations.	3	0	3	2	n/a
36	Transport for the North	PS	Officer	Northern NPs, TftN road and rail,	2	2	3	7	To improve connections between the northern cities in order to improve productivity and economic benefits. Group considers NPs as important vsiitor destinations. Partnership advises NPAs about route corridors that are options for upgrading road and rail, and camn provide funding for environmental mitigation.	2	0	2		n/a
37	Undergrounding - Joint Working Group for Northern Powergrid (NEDL & YEDL areas)	TH	Officer	Northern Powergrid, NPAs and AONBs in Yorkshire, Lincolnshire and Northumberland	4	1	2	7	To oversee implementation of programme of works to place overhead power lines underground in those parts of National Parks and AoNBs whose electricity network is provided by YEDL & NEDL. Removal of overhead power lines and enhancement of natural beauty of key parts of the NP landscape and village conservation areas.	2	0	2	2	n/a

38	Cumbria Conservation Officers Group	MJ	Officer	LAs, English Heritage, NECT, IHBC	3	3	1	7	Sub regional forum to discuss Historic environment issues and share best practice, especially with regard to the built environment, identify areas of concern and engender local support for initiatives.	2	0	2	2	n/a
39	English Black Grouse BAP group	IC	Officer	EN, Game Conservancy, MoD, NPAs, RSPB etc	4	2	1	7	Considers issues relating to Black Grouse conservation in North of England, and promotes appropriate conservation action. Improved conservation of Black Grouse within the National Park.	2	0	2	1	n/a
40	North Yorkshire Conservation Officers Group	GR	Officer	LAs, English Heritage	3	3	1	7	Sub regional forum to discuss Historic environment issues and share best practice, especially with regard to the built environment, identify areas of concern and engender local support for initiatives.	2	0	2	2	n/a
41	YNYER LEP Infrastructure Programme Board	PS	S Parsons	LEP area LAs, Moors & Dales NPs	1	1	5	7	Infrastructure Project Board (IPB) established as part of York, North Yorkshire & East Riding Local Enterprise Partnership to provide improved accountability for funding and delivery of YNYER LEP infrastructure agenda	0	2	2		n/a
42	North Yorkshire Economic Development Officers Group	PS	Officer	NYPUs, LAs, NYMNPAs	1	1	5	7	Partnership developing county-wide arrangements for, and content of, YF economic Development programmes. Important to be involved in the process to influence the contents of the economic programmes and to identify opportunities for funding.	1	0	1	2	n/a
43	Association of Local Government Archaeological Officers	MJ	Officer	Principal curatorial archaeologist in LAs in England, Wales, and Scotland	3	3	1	7	National and regional organisation with specialist national committees and regional subgroups. Principal means of liaison with regional archaeological bodies regarding eg standards for fieldwork, research agenda. Provides examples of best practice and opportunities for peer review.	1	0	1	2	n/a
44	Cumbria Strategic Recovery Coordinating Group	DB	Officer	Cumbria CC, District Councils, Cumbria constabulary, CVS, Cumbria LEP, LDNPA, health partnerships etc	1	3	3	7	Grouping of Chief Executives set up to coordinate action across Cumbria to support recovery from the impacts of the Covid pandemic.	10	0	10		
45	NY Local Authority 'Low Carbon' Lead Officers Group	GS	Officer	All local authorities in North Yorkshire	2	1	3	6	Informal group to share information and encourage collaboration between local authorities across North Yorkshire.	3	0	3		n/a
46	YNY&ER Directors of Development Group	GS	Officer	Sub Regional Local Government Partners	1	1	4	6	Provide leadership and coordination across sub-regional Local Authority partnership structures and public services generally, and to make recommendations for decisions to Chief Executive Officers and to Local Government North Yorkshire and York, with a view to supporting and further enhancing levels of economic growth and prosperity.	6	0	6	2	n/a
47	Cumbria LNRS Steering Group	TS	Officer	LAs in Cumbria; Cumbria LNP; NE, EA, FC; LDNPA, AONBs, RSPB, NFU etc.	4	2	0	6	To test out the principles and processes behind the Environment Bill clauses relating to Local Nature Recovery Strategies, producing a draft LNRS for Cumbria.	10	0	10	1	2021
48	Raptor coordination Group	AS	Officer	Police; Moorland Association, BASC, CLA etc	4	1	1	6	To devise and implement a local approach to end illegal persecution of raptors, including independent and scientifically robust monitoring, and co-ordinated Hen Harrier nest and winter roost site protection.	4	0	4	1	2024
49	Cumbria Planning Training Scheme	MC	Officer	All planning authorities in Cumbria	2	1	2	5	Jointly commissions training for professional planning staff. Economical & focused training for CPD purposes	1	0	1	1	n/a
50	South Lakeland Housing Advisory Group	PS	MC for Sustainable Development	SLDC, YDNPA, LDNPA, Registered providers, Private Sector Housing Bodies	0	0	3	3	Considers any housing issues related to the South Lakeland District including the Lake District and Yorkshire Dales national park areas of the District.. Provides advice and support to the South Lakeland Local Strategic Partnership on housing issues.	3	2	5	2	n/a
51	Cumbria Joint Public Health Strategy	RGr	Officer	Cumbria CC, Eden DC, South Lakeland DC, Barrow BC, Scott Burns, Copeland BC, Allerdale BC, LDNPA	0	0	3	3	Implementation group for the Cumbria Public Health Strategy	4	0	4		n/a
52	Swinden Quarry Trust	DGP	R Heseltine & C Lis	PCs, Tarmac, some individuals	2	0	0	2	To manage the investment of the trust fund for the long-term management of the site after the restoration of the quarry. S106 agreement in place to provide funding for site management once the quarry closes in 2020.	2	2	4	1	2039
Total days										346	64	410		

	Project	Lead officer	Partners	Description/Effectiveness for NPA and Nat Park	Indicative Annual Costs				End date
					Staff	Cash	Income	Total	
1	Westmorland Dales Landscape Partnership	Kathryn Beardmore	FoLD, CWT, WT, CCC, EDC, ERT, FN, NE, LAS, CG	A £3.5m programme of works to enhance the landscape in the north west of the new National Park area. Includes funding for local communities and organisations to: restore important wildlife habitats; create woodlands; restore traditional fieldbarns, historic buildings and archaeology; improve physical access; encourage volunteering; develop formal and informal learning opportunities; and, provide training in traditional skills through apprenticeships	£95,000	£655,000	£-600,000	£150,000	2023
2	Tees-Swale: Naturally Connected	Gary Smith	NPA, AONB, NE, EA, farmers, landowners	£8.5 million 5-year programme to collaborate with farmers, landowners and environmental bodies to generate the behaviour change that will sustain our High Nature Value farming systems and important habitats across Teesdale and Swaledale. New audiences will discover, explore, enjoy and understand the area's heritage and we will make it a place of high quality learning and training	£90,000	£117,000	£-147,000	£60,000	2024
3	Woodland creation	Geoff Garrett	Woodland Trust	Partnership to jointly fund a Woodland Project Officer Post in order to encourage additional New Native Woodland Creation within the Yorkshire part of the NP.	£35,000	£0	£-20,000	£15,000	2023
4	Pennine National Trails Partnership	Alan Hulme	County and Borough Councils, NPAs, Natural England & Pennine Prospects	Partnership set up to have collective responsibility for: providing well-managed and high quality national trails (Pennine Way and Pennine Bridleway) across the whole length of each trail and to support the economic and social well-being of communities along their length. YDNPA acts as Lead Authority for the Partnership.	£110,000	£55,000	£-155,000	£10,000	n/a
5	Great Places: Lakes and Dales	Kathryn Beardmore	CDC, SLDC, LDNPA, various local arts bodies	A £1.5 m programme of research and investment focused on the rural corridor linking Skipton (Craven) in the south and Grasmere (South Lakeland) in the north, including the market towns and rural hinterlands, extending into both the Yorkshire Dales and Lake District National Parks. It aims to use culture as a means of rural regeneration and to attract younger people to the area.	£5,000	£5,000	£0	£10,000	n/a
6	Our Common Cause	Adrian Shepherd	Foundation for Common Land, National Trust, NE, NFU, OSS, RSPB, LDNPA, DNPA, Shropshire Hills AONBP, Moorland Association, SW water,	£3.1m 3-year programme to enhance the heritage of upland commons in four of England's cultural landscapes, including 3 commons in the YDNP. The programme will build skills, trial practical conservation, and through learning and volunteering, increase and celebrate ancient cultural practices and environmental assets.	£45,000	£10,000	£-49,000	£6,000	2024
7	Ingleborough Access	Kate Hilditch	Natural England	Partnership between Natural England and YDNPA to improve access especially on the Three Peaks route and restore fragile habitats on the Ingleborough National Nature Reserve. This project primarily improves Public Rights of Way but also improves adjacent habitats	£5,000	£60,000	£-60,000	£5,000	2022
8	Generation Green	Sally Robertshaw	YHA, English NPAs, Scouts, Guides, Field Studies Council, and Outward Bound.	To connect young people to nature and support them to develop skills to support nature recovery. The partners will work together to deliver activity including direct and virtual experiences in the outdoors for young people on a model that moves from mass-reach virtual experiences for many to skills development, volunteering and employment for a few.	£46,968	£10,100	£-56,068	£1,000	2022
9	Upper Aire Land Management Project	Helen Keep	Yorkshire Wildlife Trust; Environment Agency; Yorkshire Farming and Wildlife Partnership	The project works with farmers and landowners to tackle water quality issues by improving agricultural practices, reducing diffuse agricultural pollution, improving natural flood management and restoring habitats.	£400	£0	£0	£400	2019
10	Results-Based Agri-environment Payment Scheme	Helen Keep	DEFRA, NE & YDNPA	Part of DEFRA's ELMS 'tests & trials' programme. Practical trial of a results-based agri-environment scheme within Wensleydale, advising farmers, developing scheme assessment methodology, monitoring results, reporting back to NE & DEFRA on progress.	£26,500	£0	£-26,500	£0	2023
11	Payment for Outcomes	Helen keep	National Trust	Work in partnership with the NT to help them develop and implement their 'payment for outcomes' trial with their farm tenants, provide technical support & advice to further the project.	£3,000	£0	£-3,000	£0	2023
12	Farm Carbon audits	Helen Keep	Nidderdale AONB; Yorkshire Water; Farm Carbon Toolkit; Yorkshire Water	A project to work with farmers in the Dales to carry out 'carbon audits' and develop action plans for reducing emissions, and improving the viability of the farm business.	£1,000	£27,000	£-16,000	£12,000	2021
				Totals	£462,868	£939,100	£-1,132,568	£269,400	