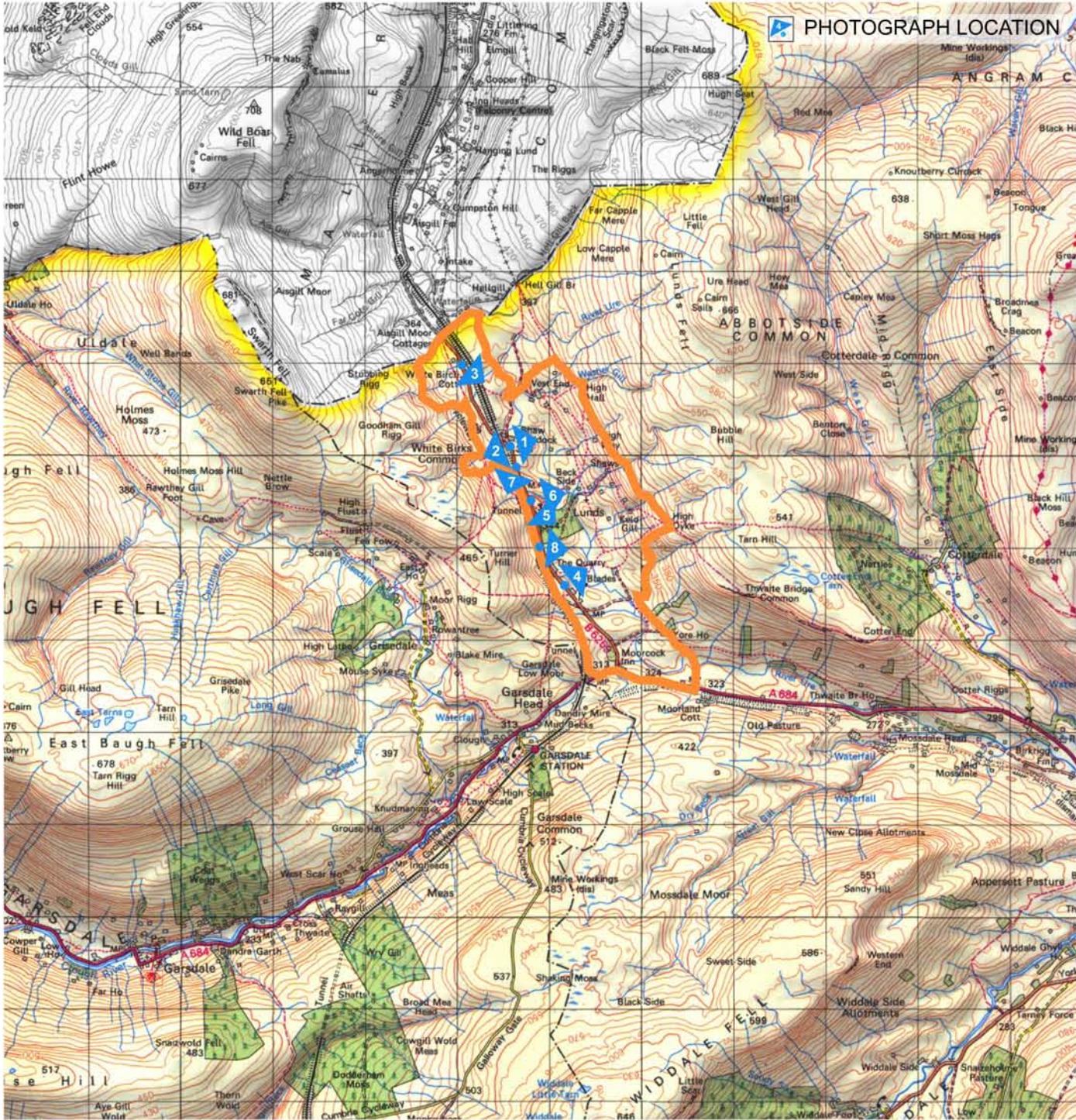
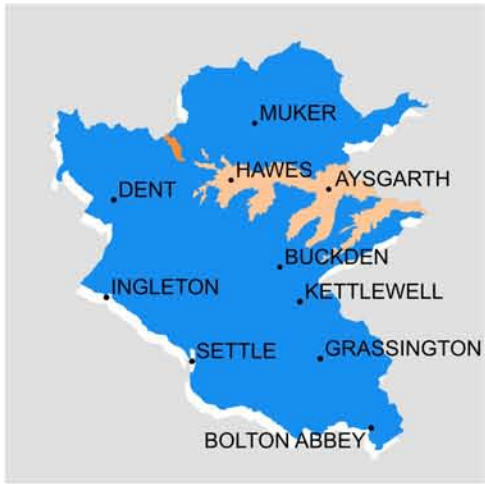
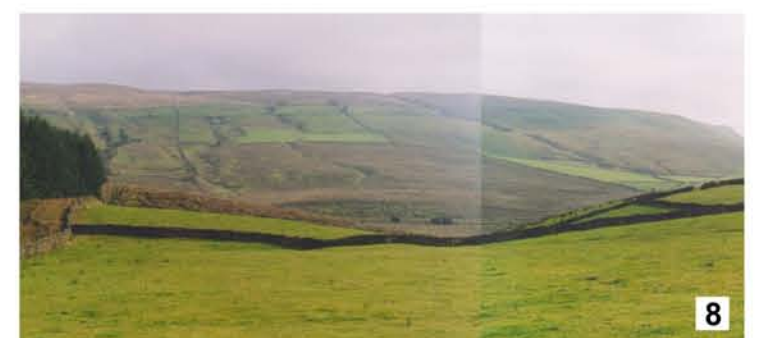


YORKSHIRE DALES NATIONAL PARK



KEY CHARACTERISTICS

- Elevated, open and remote, broad u-shaped valley overlying Yoredales, forming the wilder, upper reaches of Wensleydale.
- Gently graded valley sides to the north, becoming steeper and more enclosed further south.
- Drumlins either side of the river give a hummocky appearance to the valley floor over the lower and middle reaches, becoming wider and flatter further towards the dale head.
- River is shallow and fast-flowing with grassy, unvegetated banks.
- Frequent winding gills, often wooded, on eastern dale side, give an undulating, indented appearance.
- Large coniferous plantation at Lunds forms unsympathetic contrast to open character of valley.
- Few farmsteads present, generally located on the lower eastern side of the valley.
- Field sizes are medium along the valley floor becoming larger and more elongated higher up the valley sides, enclosed by crumbling walls with little evidence of repair.
- The valley floor and lower valley sides are predominantly sheep grazed rough or improved pasture, often with a high proportion of sedges, and very occasional hay meadows on the valley floor and lower valley sides. Sense of area slowly reverting back to moorland.
- Settle to Carlisle railway is highly visible running from north to south along the lower western side of the valley.



8 UPPER WENSLEYDALE