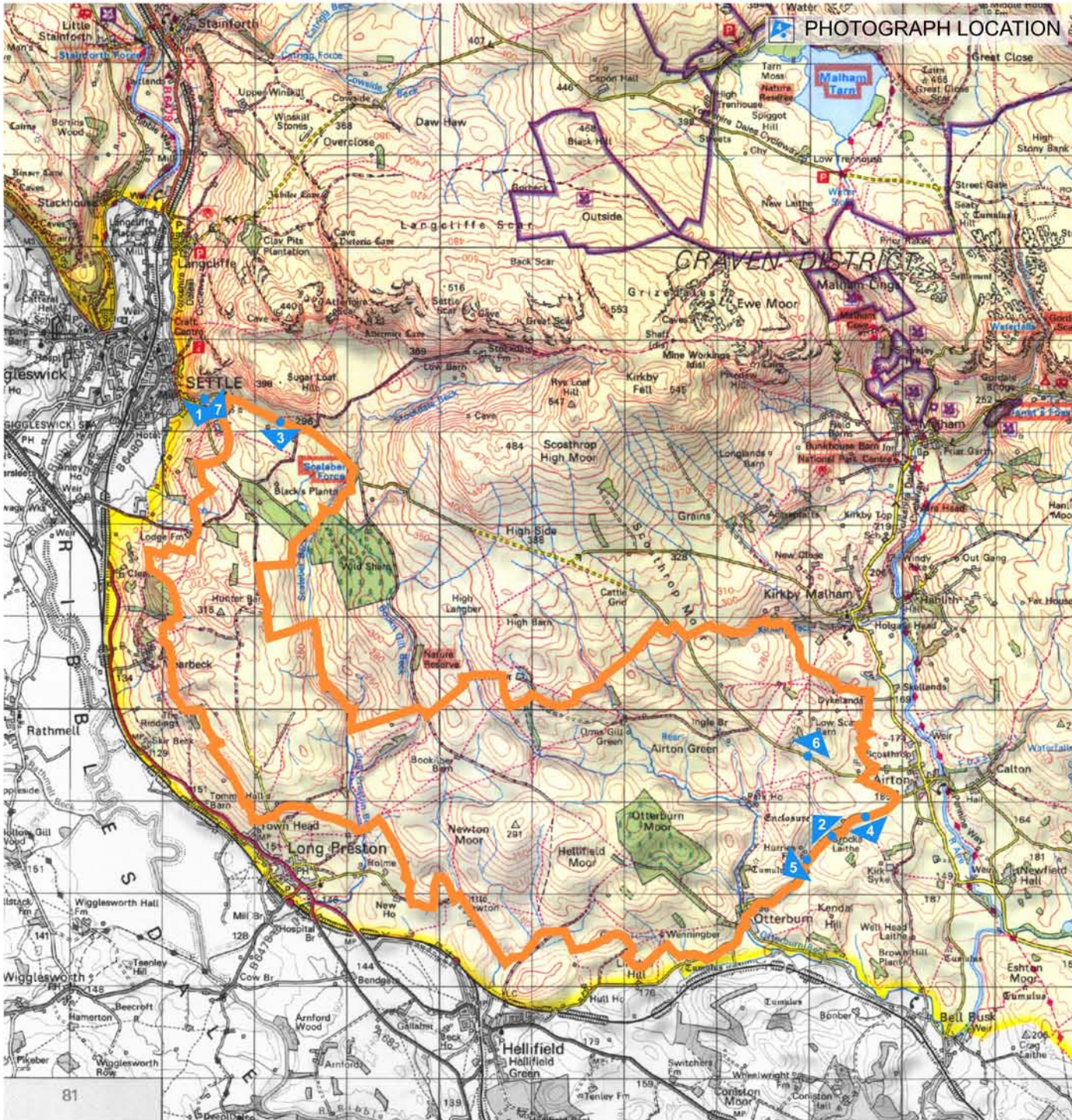
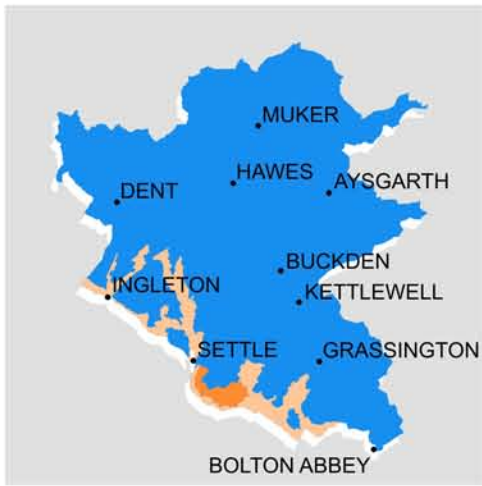


**YORKSHIRE DALES NATIONAL PARK**



**KEY CHARACTERISTICS**

- Open, hilly, sparsely settled transition landscape, falling away gradually from elevated Scosthrop Moor to lowlands to south and west.
- Oval or round domed hills formed by glacial deposition drained by small becks which thread a winding course through the hills, occasionally bounded by linear deciduous woodland.
- Large regularly shaped coniferous plantations are superimposed upon the landscape, detracting significantly. Small areas of deciduous woodland are an occasional feature.
- Medium to large regularly shaped field divided by limestone and gritstone walls enclose improved pasture and occasional hay meadows.
- Varied land cover includes patches of bracken, heather and grass moor. Small disused quarries pepper the area.
- Relatively inaccessible with few roads; a network of walled green lanes, tracks, footpaths and bridleways cross the area.
- Small traditional farms concentrated on boundary areas; central part of area is sparsely settled.

