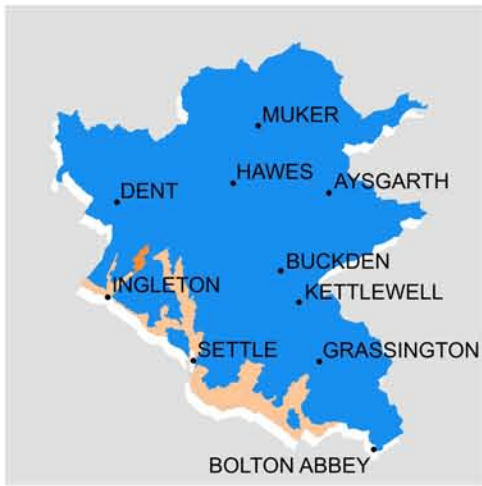


**YORKSHIRE DALES NATIONAL PARK**



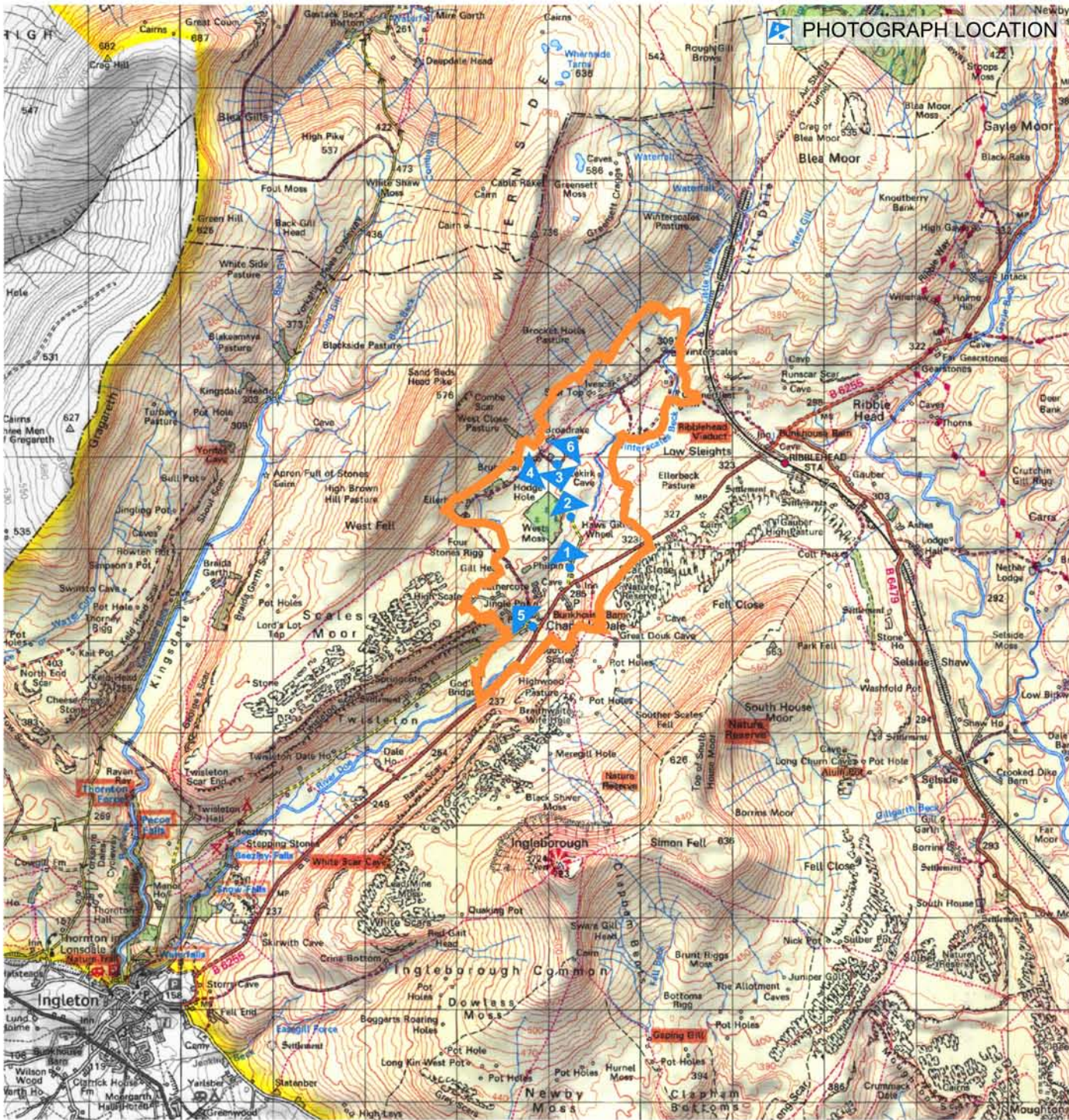
1

**KEY CHARACTERISTICS**

- Broad u-shaped dale over limestone, complexity added by undulations, small ridges and hillocks within valley floor; dale narrows to a v-shape enclosed by limestone scars above Chapel-le-Dale hamlet.
- Broad, gently farmed slopes on northern valley side, southern valley side has obvious scars and a moorland character.
- Winding beck rarely visible and disappears below ground leaving a narrow dry valley. Waterfalls occur within beck and tributaries.
- Shakeholes, potholes and caves create interest and variation.
- Regular pattern of stone walls enclosing mainly improved pasture extends across the area and onto moorland; a more irregular pattern around hamlets.
- Well treed, particularly around Chapel-le-Dale hamlet; open groups of trees line valley sides and mark scars. Trees also on roadside, by beck, on field boundaries and within fields. A distinctive line of trees links a series of hamlets along former packhorse route on northern valley side.
- Large regular conifer block in centre of dale detracts.
- Settlements include hamlets, scattered farms and remains of ancient settlements.
- Views to Ingleborough and Wharfedale dominate particularly from more open dale head. The Ribblesdale Viaduct is a dramatic feature of the dale head.



3



2



4



5



6

**19 UPPER CHAPEL-LE-DALE**