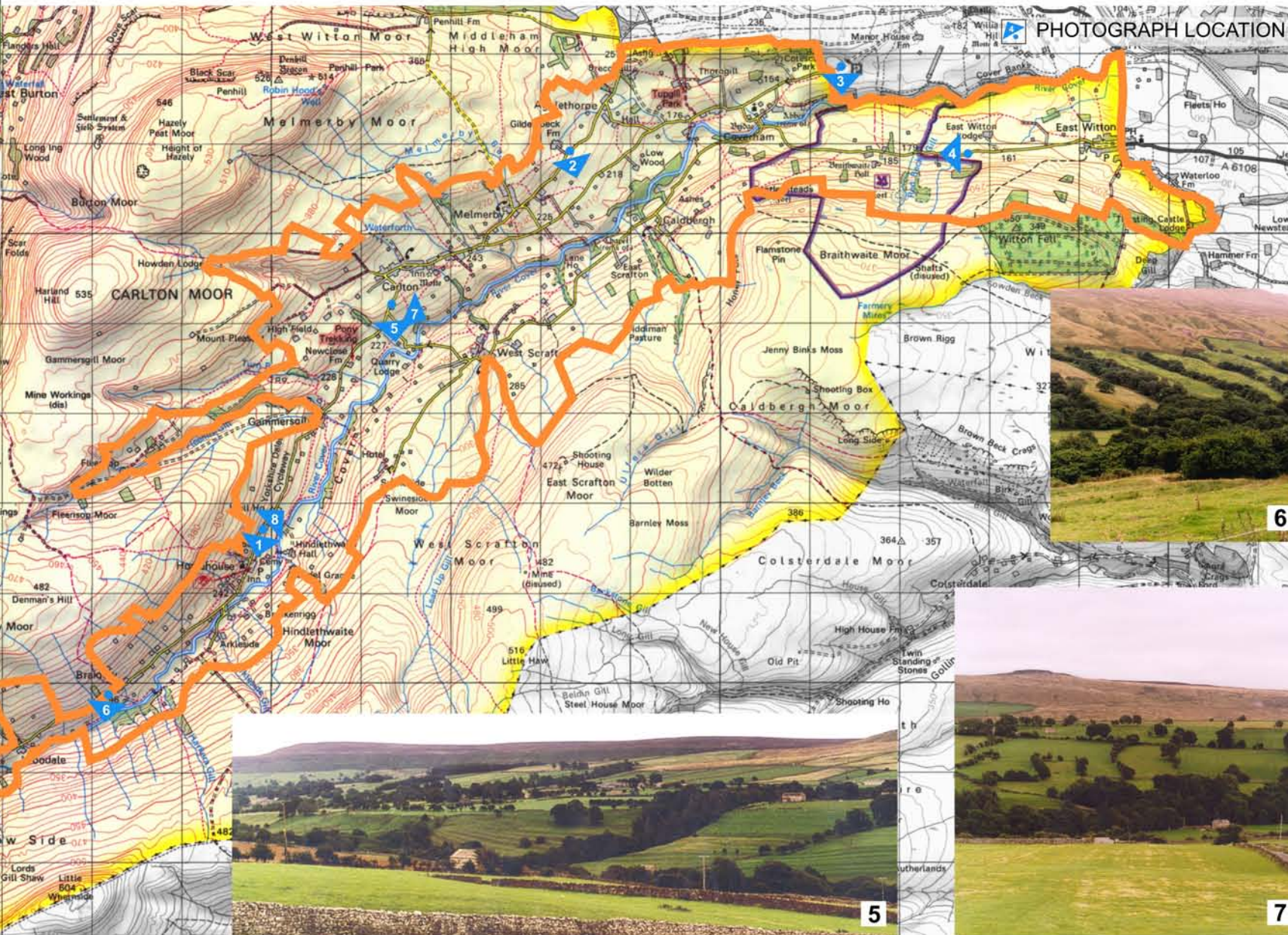
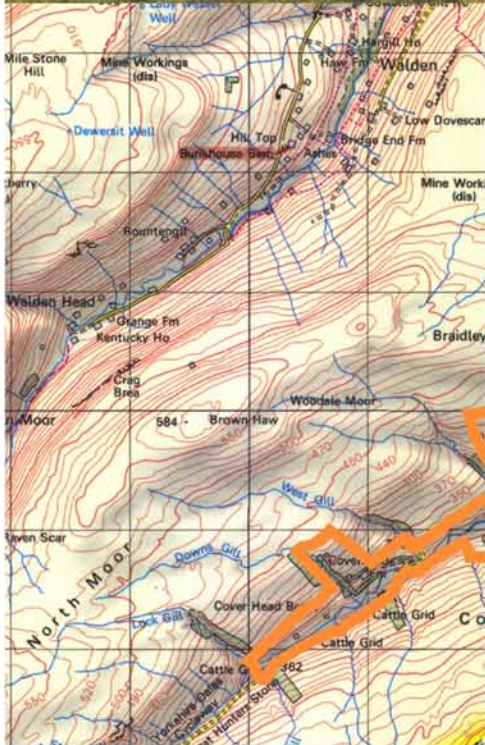
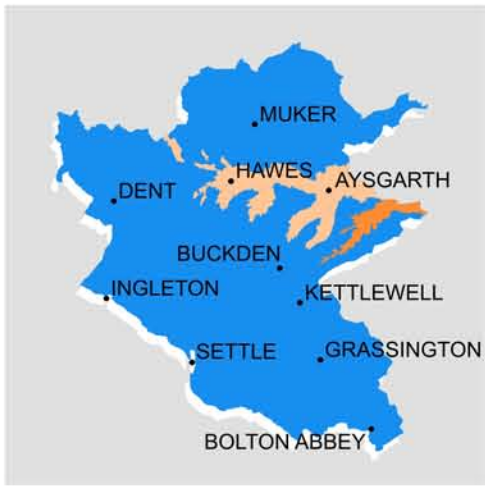


YORKSHIRE DALES NATIONAL PARK



KEY CHARACTERISTICS

- Long, sinuous u-shaped glacial valley overlying Great Scar limestone and with valley sides formed by rocks of the Yoredale series, forming a large tributary valley of Lower Wensleydale.
- Enclosed, narrow profile with steeply sloping sides at the head of the dale widening out to a broad profile, with gently undulating landform in the lower reaches.
- Frequent steep wooded parallel gills are a very marked feature particularly at the dale head reducing in steepness towards the lower reaches of the valley.
- River gently meanders with stony channel, stony beaches and low banks with side terraces. Extensive tree cover adjacent to the river.
- Green and well treed, tree cover being mostly associated with the river, valley side gills and field boundaries. Tree cover tends to be concentrated on the valley floor and extends up the valley sides in a marked linear pattern following gills or field boundaries and petering out at the top of the valley side to leave the crest of the valley bare.
- Field boundaries, enclosing mostly improved pasture picked out by trees; drystone walls are present but not a marked feature as they are often hidden by tree cover. Hedgerows and post and wire fences become more frequent in the lower dale.
- The lower end of the valley has a strong parkland character.
- Populous valley with a number of traditionally constructed linear villages, hamlets and scattered farmhouses, concentrated in the lower dale.
- Three main settlements situated in the centre of the dale partway up the valley slopes on either side of the river, all traditional, constructed with local stone with evidence of modernisation and conversion to holiday homes. Numerous other hamlets and farmhouses situated close to the valley floor on both sides of the river.
- Strong contrast between soft wooded green character of the dale and the bare open expanses of the adjacent moorland. Dale becomes increasingly open and wild with elevation.
- Several sites of historical interest within the valley.

