

Figure 8. Area of estimated home range size of the cattle (green circles) and the area available to the cattle (red diamond). Each point is the mean (\pm SE) calculated from all the deployments. Each calculated home range uses the entire data set for each animal i.e. it represents the 100% isopleth

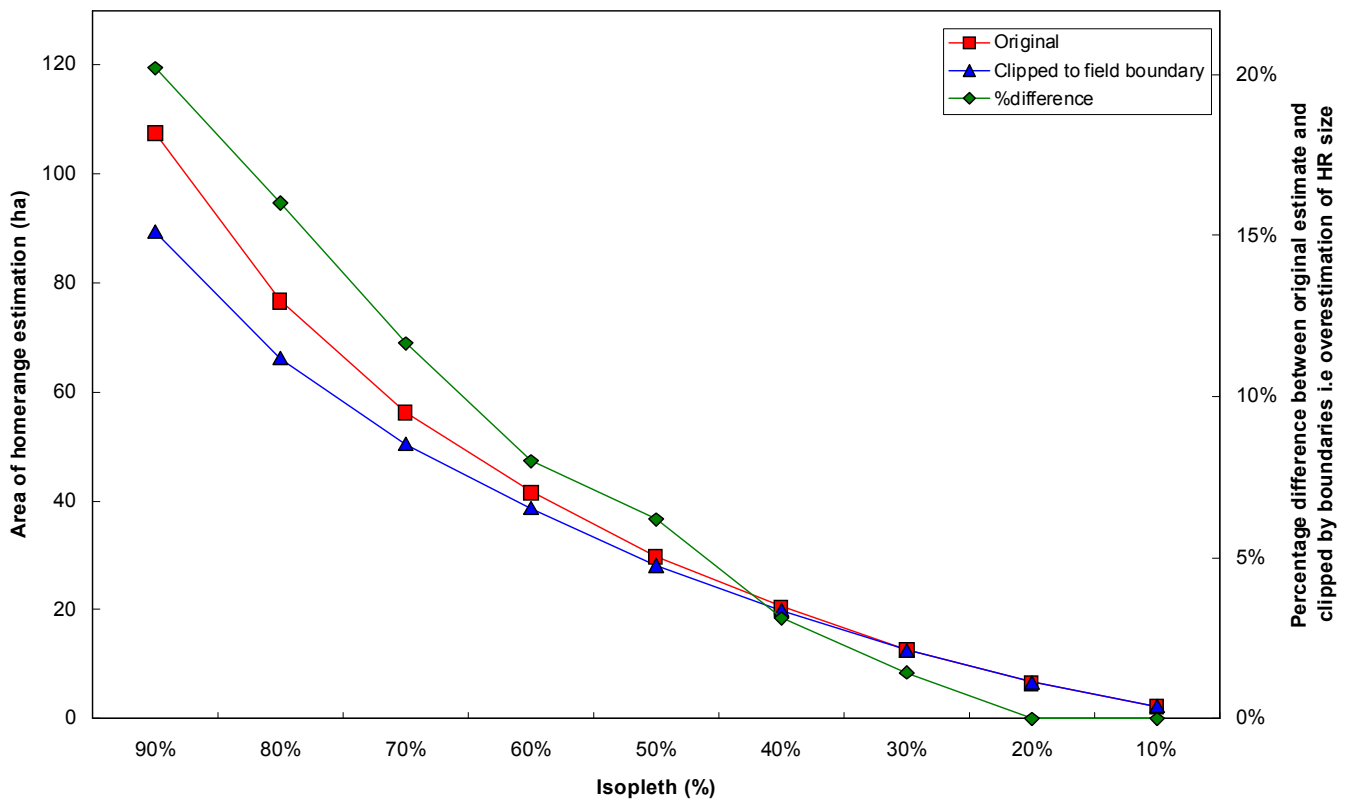


Fig. 9. Comparison between the home range (ha) estimated by kernel analysis (red line and squares) and the area once the home range has been clipped to fit within the field boundaries (blue line and triangles) at different level of activity (isopleth). The percentage of home range that overextends beyond the field boundary (green line and diamonds) is also provided

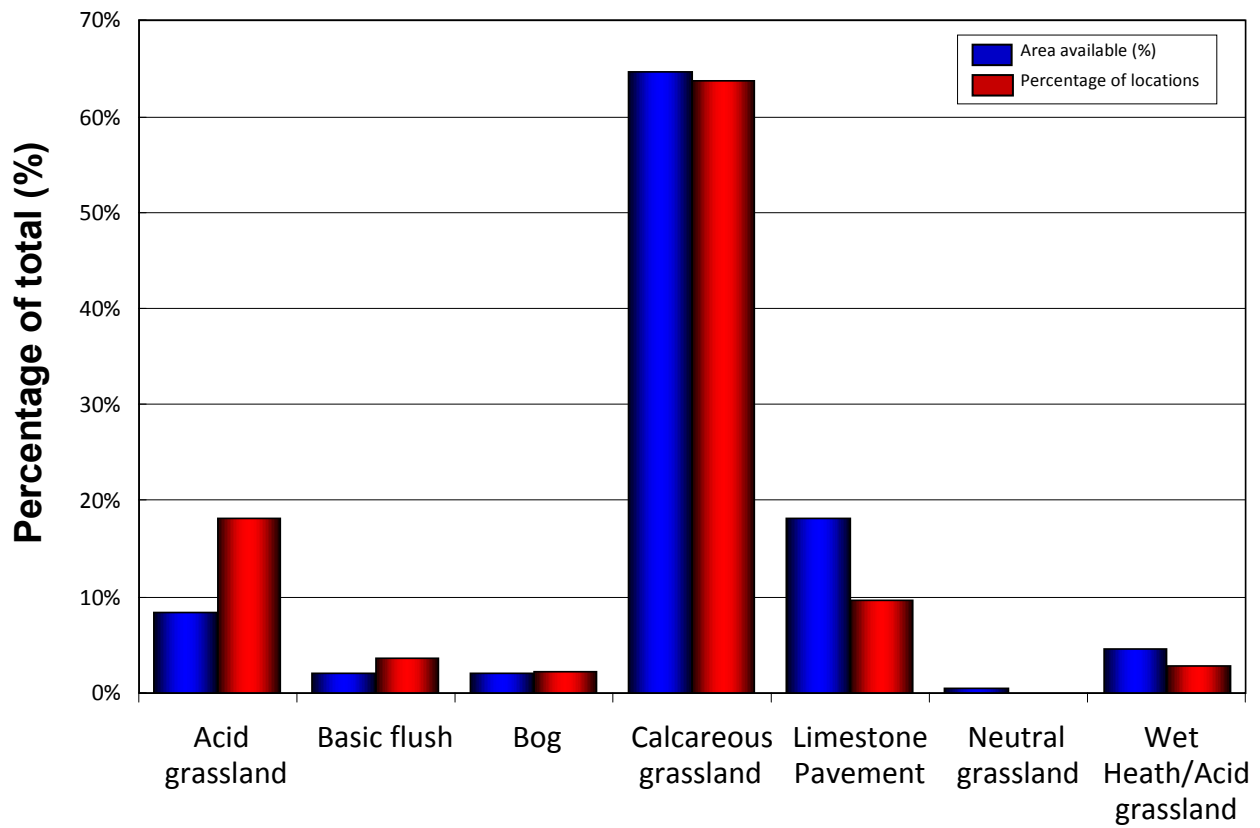


Fig. 10. Comparison between the area of each habitat available to the cattle (blue columns) as a percentage of the total area and the percentage of all the cattle locations determined from the GPS collars that occur within each of the different habitats (red). Data are from both Sulber and High Brae