

Figure 15. Grazing density on Sulber and High Brae. Utilisation distribution estimated by kernel analysis. Red areas denote those areas of highest grazing intensity. UD estimation based on those points where the cattle were assumed to be grazing from their movements. (grazing animals moving at a speed $>0.02 \text{ ms}^{-1}$ and $<0.33 \text{ ms}^{-1}$)

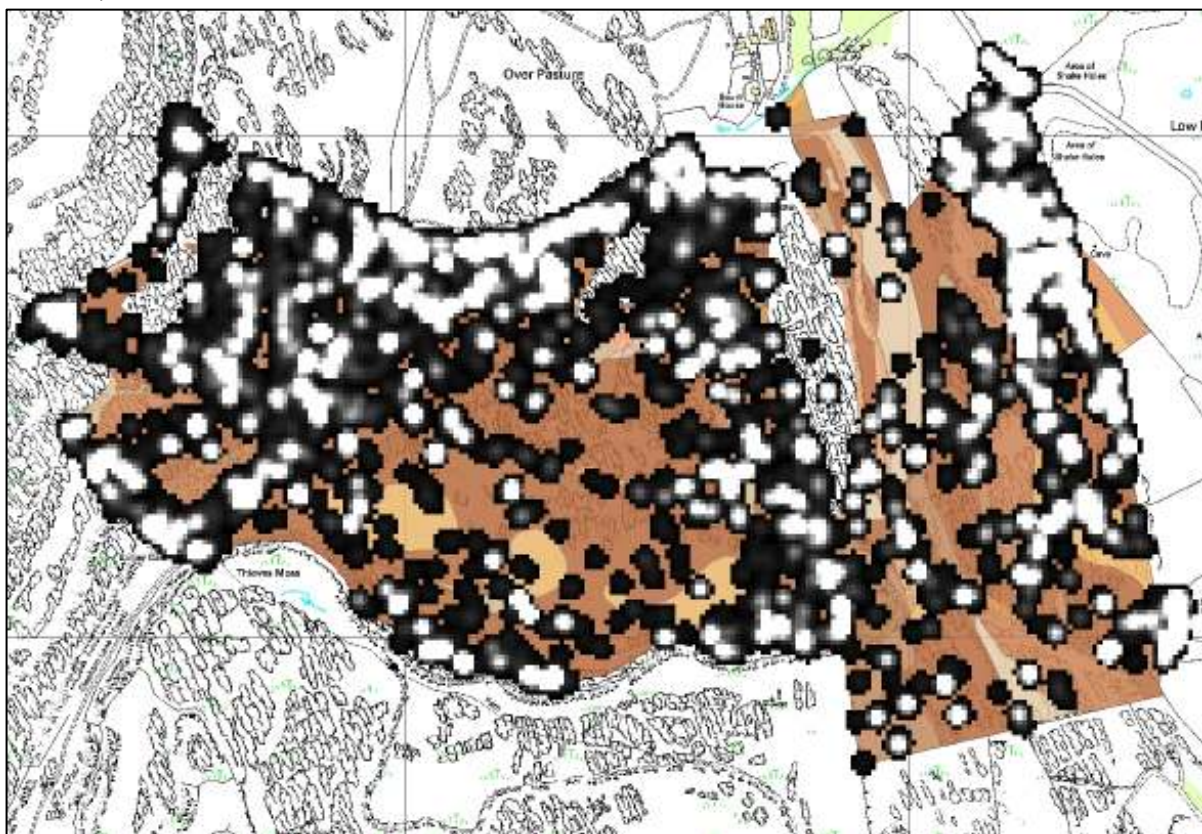


Figure 16. Resting density on Sulber and High Brae. Utilisation distribution estimated by kernel analysis. White areas denote those areas of where the animals spent most of their time resting. UD estimation based on those points where the cattle were assumed to be resting from their movements. (resting animals moving at a speed $<0.02 \text{ ms}^{-1}$)