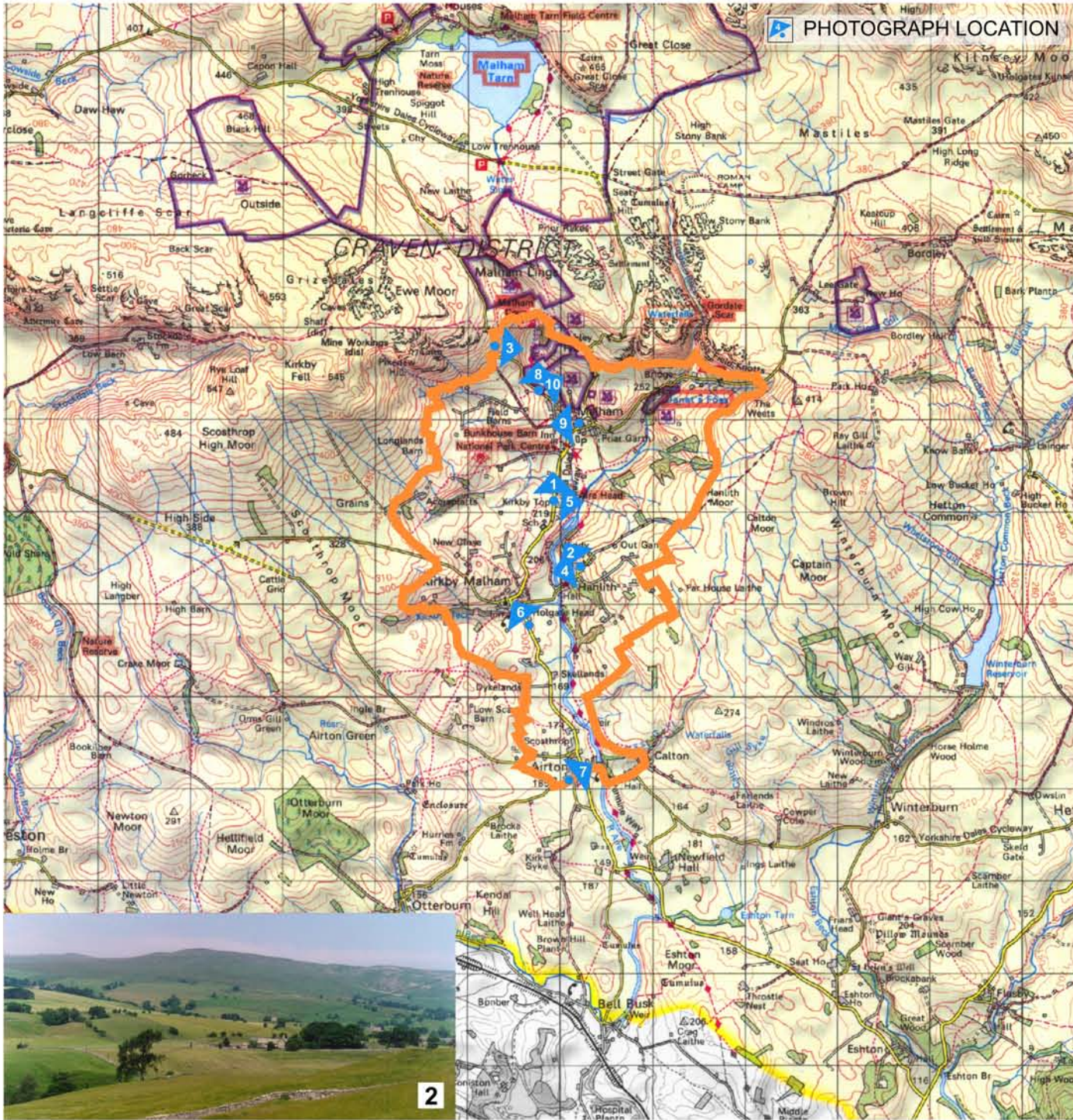
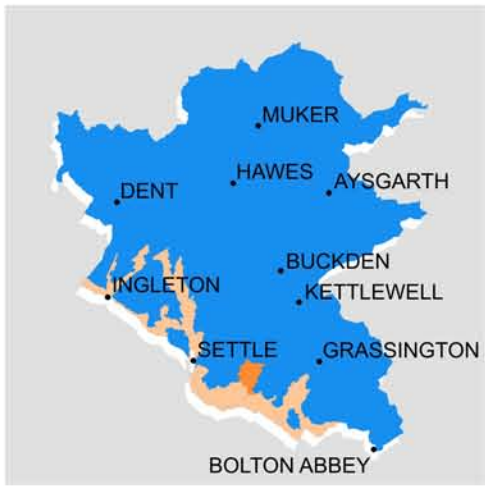


YORKSHIRE DALES NATIONAL PARK



KEY CHARACTERISTICS

- Classic example of limestone faultline landscape of national importance enclosed by Great Scar Limestone upland to the north and gritstone moors to east and west.
- Dale relatively broad in upper reaches with gently sloping valley sides stopping abruptly at the line of the Great Scar limestone escarpment; more narrow and enclosed in lower reaches, with often steep banks to beck.
- Huge natural amphitheatre at Malham Cove, 70m high, dominates Malham village and the open dale head. Gordale Scar, with its towering limestone walls, is cut into the dale head limestone escarpment.
- Significant deeply incised wooded tributaries drain the valley sides.
- Well treed with mixed and deciduous species in lower reaches, concentrated within gills, on steeper slopes by river and around settlements; less wooded with increasing elevation.
- Pastoral landscape of light limestone walls and barns with hedgerows more frequent in lower dale. Historic pattern of dry stone walls and walled lanes climbing the hillside is a dominant feature of the more open dale head.
- Traditional settlements of largely Anglian pattern constructed in gritstone and limestone, the latter prevalent in the upper reaches of the dale, and some buildings are rendered/pebbledashed and painted white.
- Visitors have significant visual effect upon Malham and access roads in busy periods.

